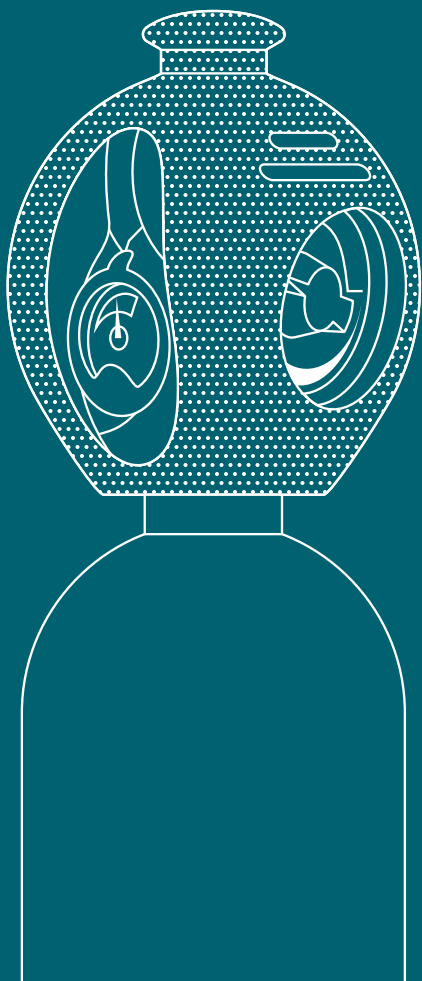


Airgas | **EXELTOP™**
an Air Liquide company

Trust in
performance



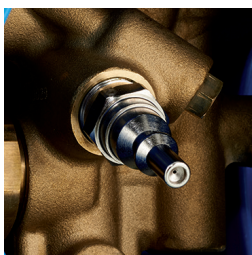
EXELTOP™

Ensure superior results



Advanced built-in two-stage regulator

- Eliminate exposure to high-pressure gas flow
- Accurate outlet pressure and flow rate
- Precise setting with new graduated handwheel



Quick connect system

- Available for all gases
- Simply connect the hose and start working



Ergonomic and shock-absorbing cap

- Easy handling
- Simple access to all functions
- Permanent, reliable protection for valve and regulator

On/off lever

- Newly designed
- Immediate gas cut-off
- On/off status at a glance



RPV/NRV function

- Keeps minimal pressure in the cylinder
- No back-flow contamination

Permanent gauge

- At a glance content monitoring
- Get a reading even when flow is stopped

Instructions

- 1 Connect the hose



- 2 Check that the graduated handwheel is at zero



3 Open the on/off lever



4 Set the outlet pressure or flow rate



5 You are ready to go!

Check the instruction manual
for detailed information

Focus on performance with EXELTOP™

Improve performance

- Intuitive to use
- Ensures stable and accurate gas flow

Work safely

- Emergency cut-off
- Protected valve
- Eliminate exposure to high-pressure gas flow

Save time

- Ready to use with built-in regulator and on/off lever
- Quick connect available for all gases

Save gas

- Eliminate gas loss with on/off lever
- Check pressure and content at a glance with permanent gauge

Save money

- No need to buy a separate regulator/flowmeter
- Regular maintenance checks by Airgas



Contact us
800.909.8058
Airgas.com

MCM-488 | ©2017 Airgas, Inc
Printed in the U.S.A.

Airgas[®]
an Air Liquide company