

Plasma Cutting Table

Designed for fabricators and metal workers who demand cost-effective and robust tables

Features

- **Industrial table with compact footprint:** 4'x4' and 4'x8' options allow for easy handling
- **High-performance FlashCut® software** is suitable for industrial applications plus innovative and artistic metalworking
- **Precision accuracy** with robust motors, gear boxes and helical gear racks typically used on high-end larger systems
- **Fast and easy setup**—connect to **your computer's USB** and start cutting
- Bonus **additional software license** included
- 8' gantry allows for **portability, space conservation and easy loading and unloading** of plates*
- **In stock and ready to ship!**
- Made in America

All of this backed by the expertise of 90+ Advanced Fabrication experts to help you solve any cutting challenge!

Visit Airgas.com today.

* Tables are also available without plasma for possible retrofitting of other plasmas. Contact your Airgas Advanced Fabrication expert for more information.

FlashCut® is a registered trademark of FlashCut CNC and is used by permission.



Ordering information

| Part number | Description |
|-------------|---|
| RAD64008904 | 4'x4' table with FlashCut V10 software |
| RAD64008905 | 4'x4' table with FlashCut V10 software and Hypertherm® Powermax45® XP |
| RAD64008906 | 4'x4' table with FlashCut V10 software and Hypertherm® Powermax65 SYNC™ |
| RAD64008907 | 4'x8' table with FlashCut V10 software |
| RAD64008908 | 4'x8' table with FlashCut V10 software and Hypertherm® Powermax45® XP |
| RAD64008909 | 4'x8' table with FlashCut V10 software and Hypertherm® Powermax65 SYNC™ |

Rugged. Reliable. Priced right.

800.909.8058 | AdvancedFab@airgas.com | Airgas.com

Airgas®
an Air Liquide company



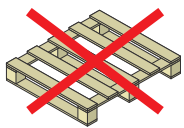
Plasma Cutting Table

Specifications*

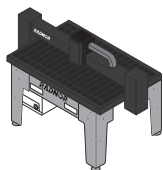
| Description | RAD64008904, RAD64008905, and RAD64008906 | RAD64008909, RAD64008908 and RAD64008909 |
|---|---|--|
| Cutting area | 4' x 4' | 4' x 8' |
| Cutting width | 48" | 96" |
| Cutting length | 48" | 48" |
| Rapid traverse speed | 1000 IPM | 1000 IPM |
| Machine width | 78" | 126" |
| Machine length (w/o CNC) | 72" | 72" |
| Table dimensions | 78" x 72" x 56" | 126" x 72" x 56" |
| Machine weight | 1300 lbs. | 2600 lbs. |
| Tool capacity | 1 | 1 |
| Water capacity | 65 gallons | 148 gallons |
| Machine voltage | 115/1/60 @ 15 AMP | 115/1/60 @ 15 AMP |
| Controller | Controlled by your laptop or PC | |
| Table type | Water pan insert | |
| Helical Rack and Pinion Drive System | | |
| Gear reduction | (3) Precision helical 10:1 gearboxes | |
| Linear guidance | 25mm profile linear rail, 30mm gantry | |
| Gear engagement | Direct drive helical rack and pinion | |
| Gantry carriage | Solid steel construction | |
| Traverse speed | 1000 IPM | 1000 IPM |
| Machine repeatability | 0.0015" | 0.0015" |
| Frame construction | 7 gauge mild steel | 7 gauge mild steel |

*Specifications are subject to change without notice. Optional equipment is available—contact your Airgas Advanced Fabrication expert for more details.

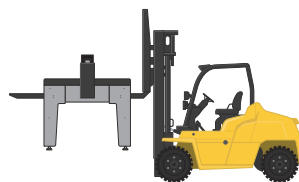
Fast set up and flexible shop configurations



No crates



Solid base



Forklift pockets

Rugged. Reliable. Priced right.

800.909.8058 | AdvancedFab@airgas.com | Airgas.com

Airgas
an Air Liquide company